



# NATIONAL WEEKLY INFLUENZA BULLETIN OF THE RUSSIAN FEDERATION

*week 44 of 2022*  
(31.10.22 - 06.11.22)

## Summary.

**Influenza and ARI incidence data.** Influenza and other ARI activity decrease of influenza and other ARI activity in Russia in comparison with previous week. The nationwide ILI and ARI morbidity level (57.6 per 10 000 of population) was lower than national baseline (70.0) by 17.7%.

**Etiology of ILI & ARI.** Among 3201 patients investigation 6 (0.2%) respiratory samples were positive for influenza, including 4 cases of influenza A(H1N1)pdm09 in 3 cities and 2 cases of influenza B in 2 cities.

**ARVI detections.** The overall proportion of respiratory samples tested positive for other ARVI (PIV, ADV, RSV, RhV, CoV, MPV, BoV) was estimated in total as 18.7% (PCR).

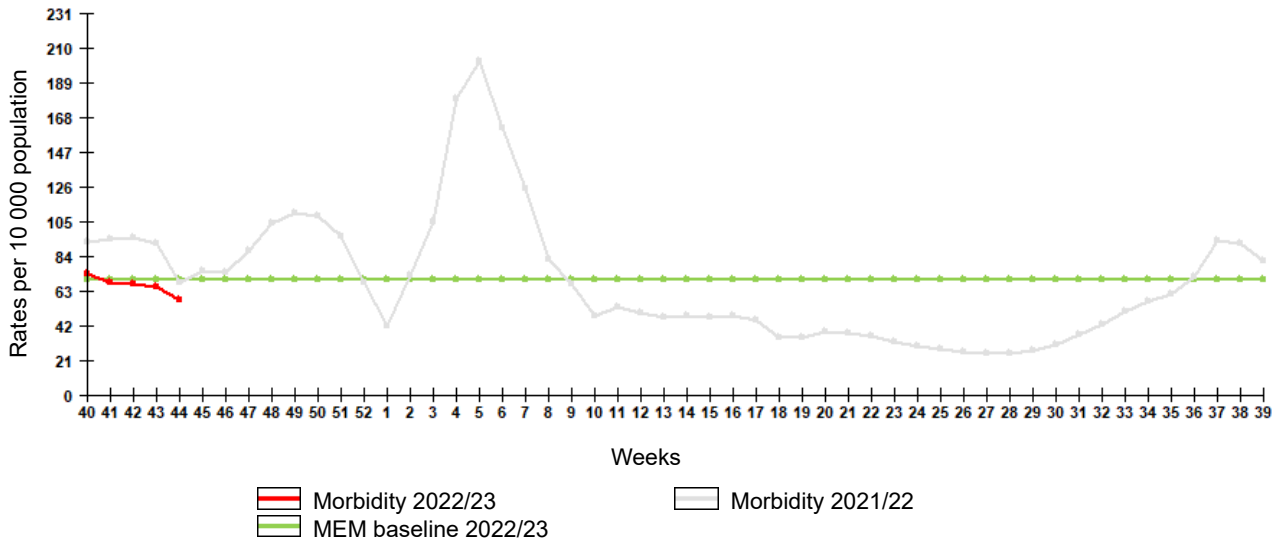
**In sentinel surveillance system** clinical samples from 56 SARI patients were investigated by rRT-PCR for influenza, among them 5 (8.9%) cases of influenza recognized including 1 case of A untyped influenza, 2 cases of A(H1N1)pdm09 and 2 cases of B influenza. 46 SARI patients were investigated for ARVI by rRT-PCR, among them 14 (30.4%) cases of ARVI recognized including 3 cases of AdV, 3 case of RSV, 3 cases of RhV, 1 case of CoV, 3 cases of MPV and 1 case of BoV infection. 51 SARI patients were investigated for SARS-CoV-2 by rRT-PCR, among them no positive cases recognized.

Clinical samples from 15 ILI/ARI patients were investigated for influenza by rRT-PCR, among them no positive cases recognized. Among 15 ILI/ARI samples 2 (13.3%) cases positive for ARVI detected including 1 case of RhV infection and 1 case of MPV. 15 ILI/ARI patients were investigated for SARS-CoV-2 by rRT-PCR, among them no positive cases recognized.

**COVID-19.** Totally 21 477 926 cases and 390 774 deaths associated with COVID-19 were registered in Russia including 5 335 cases and 62 deaths in last 24 hours (on 12:00 of 09.11.2022). According to the data obtained by NIC in Saint-Petersburg totally 9 255 clinical samples were PCR investigated in last week. Among them coronavirus SARS-CoV-2 detected in 617 (6.7%) cases.

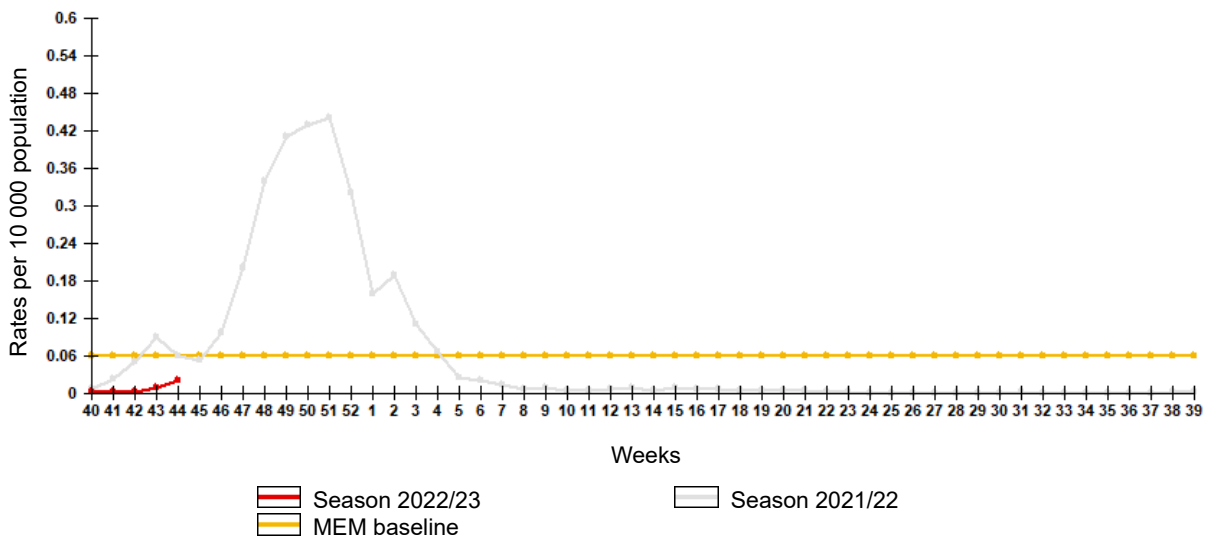
# Influenza and ARI morbidity data

Fig. 1. Influenza and ARI morbidity in 61 cities under surveillance in Russia, seasons 2021/22 and 2022/23



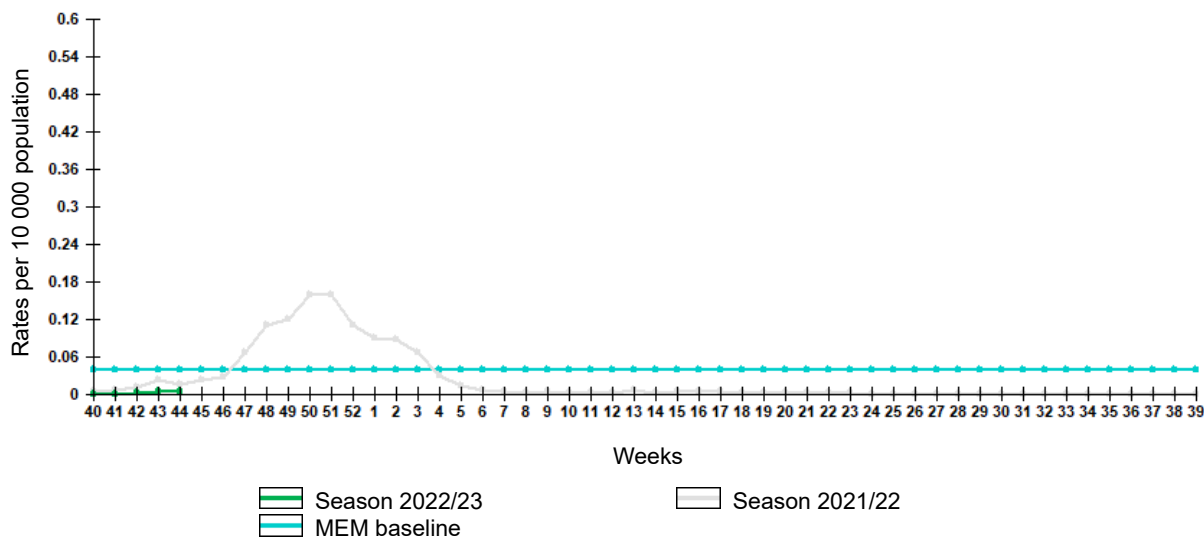
Epidemiological data showed decrease of influenza and other ARI activity in Russia in comparison with previous week. The nationwide IRI and ARI morbidity level (57.6 per 10 000 of population) was lower than national baseline (70.0) by 17.7%.

Fig. 2. Comparative data on incidence rate of clinically diagnosed influenza, seasons 2021/22 and 2022/23



Incidence rate of clinically diagnosed influenza increased comparing to previous week and amounted to 0.020 per 10 000 of population, it was much lower than pre-epidemic MEM baseline (0.060).

Fig. 3. Comparison of hospitalization rate with clinical diagnosis of influenza, seasons 2021/22 and 2022/23



Hospitalization rate of clinically diagnosed influenza increased comparing to previous week and amounted to 0.0052 per 10 000 of population, it was much lower than pre-epidemic MEM baseline (0.040).

## Influenza and ARVI laboratory testing results

Cumulative results of influenza laboratory diagnosis by rRT-PCR were submitted by 44 RBLs and two WHO NICs. According to these data as a result of 3201 patients investigation 6 (0.2%) respiratory samples were positive for influenza, including 4 cases of influenza A(H1N1)pdm09 in 3 cities and 2 cases of influenza B in 2 cities.

Fig. 4. Geographic distribution of RT-PCR detected influenza viruses in cities under surveillance in Russia, week 44 of 2022

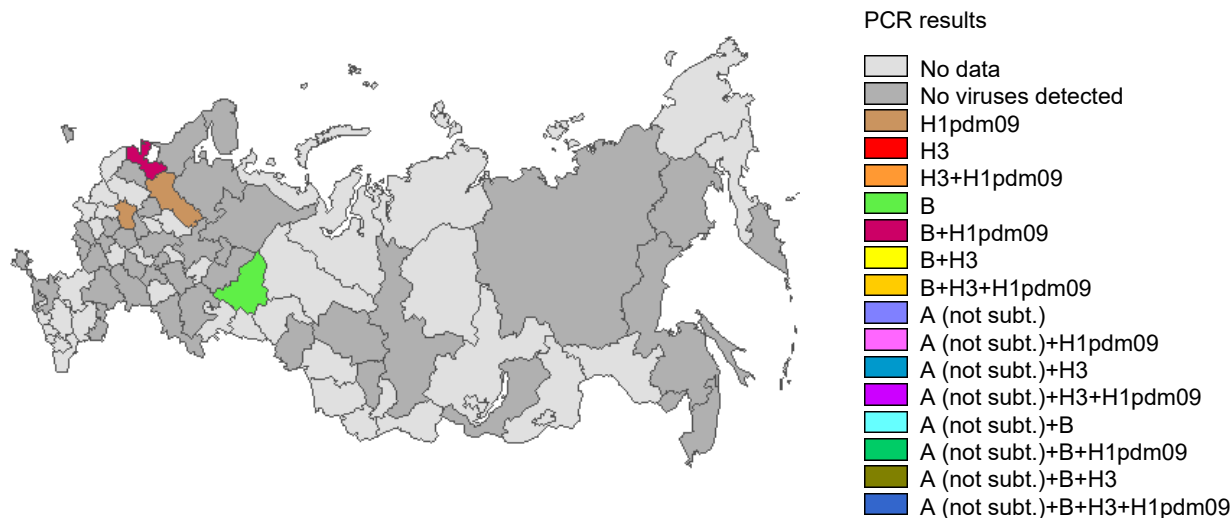


Fig. 5. Monitoring of influenza viruses detection by RT-PCR in Russia, season 2022/23

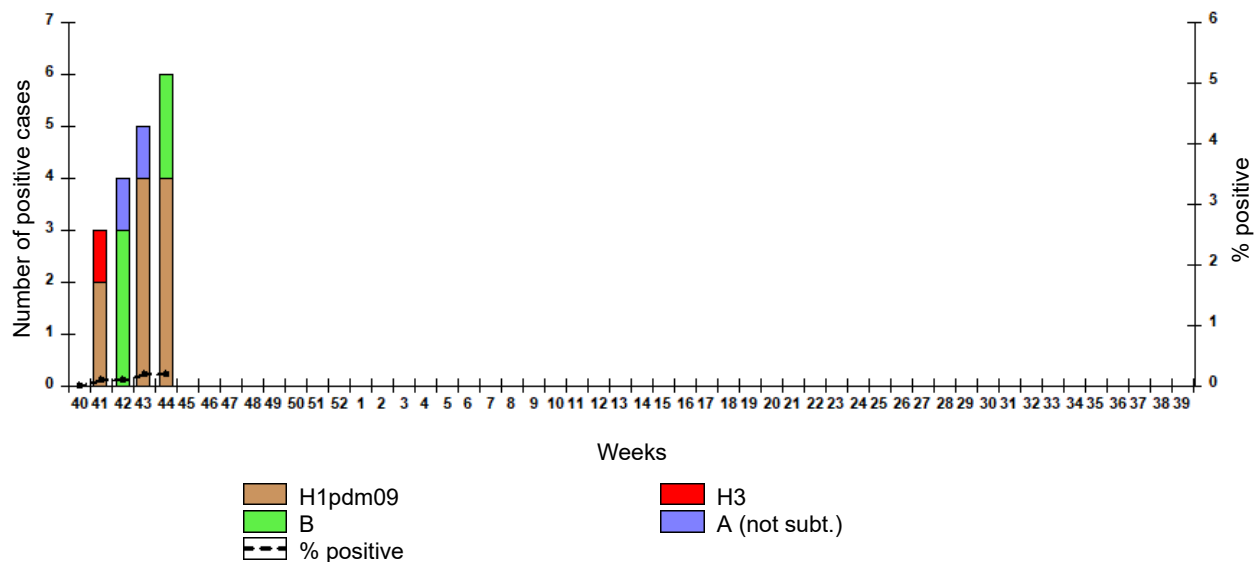
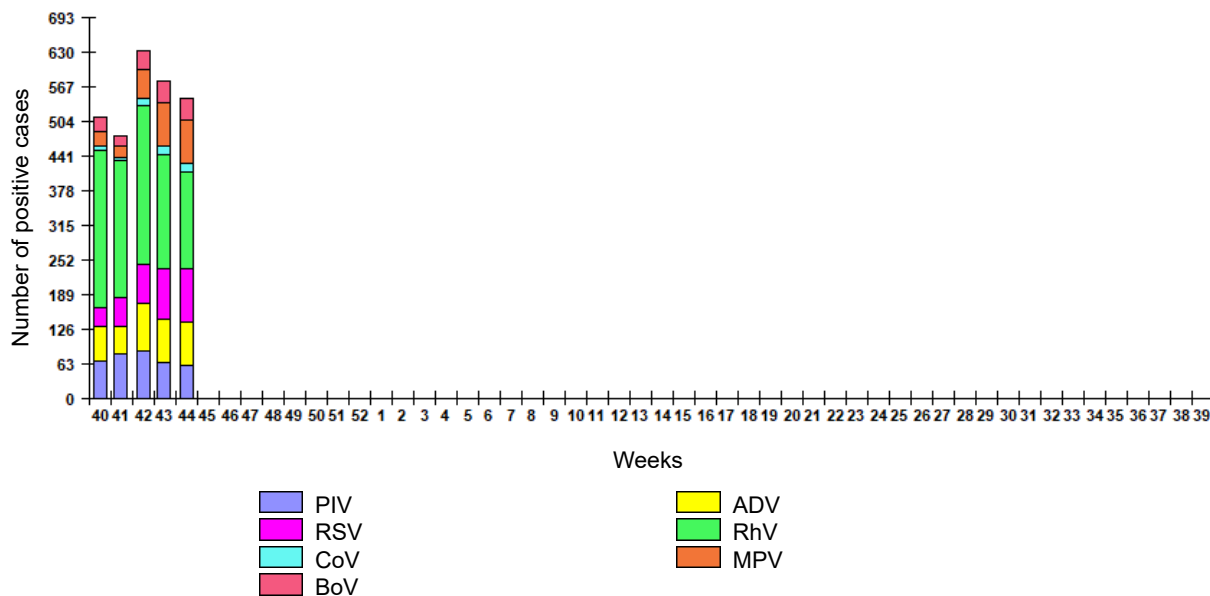


Fig. 6. Monitoring of ARVI detection by RT-PCR in Russia, season 2022/23



**ARVI detections.** The overall proportion of respiratory samples tested positive for other ARVI (PIV, ADV, RSV, RhV, CoV, MPV, BoV) estimated as **18.7%** of investigated samples by PCR.

Fig. 7. Monitoring of influenza viruses isolation in Russia, season 2022/23

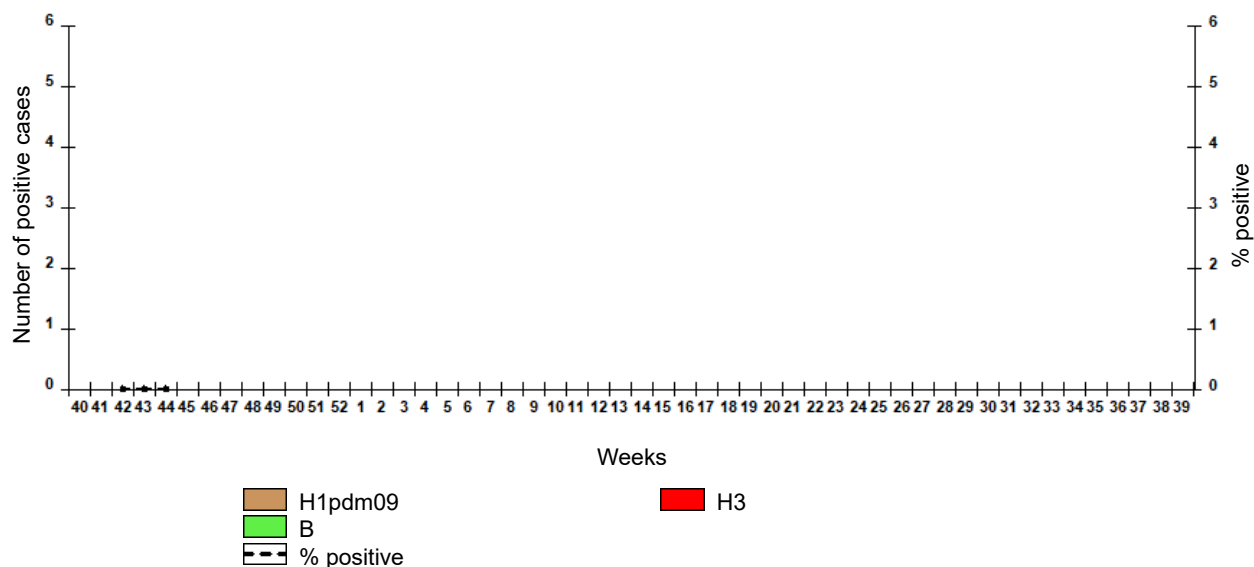


Table 1. Results of influenza and other ARVI detection by RT-PCR in Russia, week 44 of 2022

	Number of specimens / number of positive cases	% positive
<u>Influenza</u>		
Number of specimens tested for influenza	3201	-
Influenza A (not subt.)	0	0,0%
Influenza A(H1)pdm09	4	0,1%
Influenza A(H3)	0	0,0%
Influenza B	2	0,06%
All influenza	6	0,2%
<u>Other ARVI</u>		
Number of specimens tested for ARVI	2938	-
PIV	60	2,0%
ADV	80	2,7%
RSV	98	3,3%
RhV	175	6,0%
CoV	16	0,5%
MPV	79	2,7%
BoV	40	1,4%
All ARVI	548	18,7%
<u>SARS-CoV-2 (COVID-19)</u>		
Number of specimens tested for SARS-CoV-2	9255	-
SARS-CoV-2	617	6,7%

Fig. 8. Results of PCR detections of SARS-CoV-2 in Russia



**COVID-19.** Totally 21 477 926 cases and 390 774 deaths associated with COVID-19 were registered in Russia including 5 335 cases and 62 deaths in last 24 hours (on 12:00 of 09.11.2022). According to the data obtained by NIC in Saint-Petersburg totally 9 255 clinical samples were PCR investigated in last week. Among them coronavirus SARS-CoV-2 detected in 617 (6.7%) cases.

Table 2. Results of influenza viruses isolation in Russia, week 44 of 2022

	Number of specimens / number of viruses	% isolated viruses
Number of specimens	4	-
Influenza A(H1)pdm09	0	0,0%
Influenza A(H3)	0	0,0%
Influenza B	0	0,0%
All influenza	0	0,0%

## Sentinel influenza surveillance

Clinical samples from 56 SARI patients were investigated by rRT-PCR for influenza, among them 5 (8.9%) cases of influenza recognized including 1 case of A unsubtype influenza, 2 cases of A(H1N1)pdm09 and 2 cases of B influenza. 46 SARI patients were investigated for ARVI by rRT-PCR, among them 14 (30.4%) cases of ARVI recognized including 3 cases of AdV, 3 case of RSV, 3 cases of RhV, 1 case of CoV, 3 cases of MPV and 1 case of BoV infection. 51 SARI patients were investigated for SARS-CoV-2 by rRT-PCR, among them no positive cases recognized.

Clinical samples from 15 ILI/ARI patients were investigated for influenza by rRT-PCR, among them no positive cases recognized. Among 15 ILI/ARI samples 2 (13.3%) cases positive for ARVI detected including 1 case of RhV infection and 1 case of MPV. 15 ILI/ARI patients were investigated for SARS-CoV-2 by rRT-PCR, among them no positive cases recognized.

Fig. 9. Monitoring of influenza viruses detection by RT-PCR among SARI patients in sentinel hospitals, season 2022/23

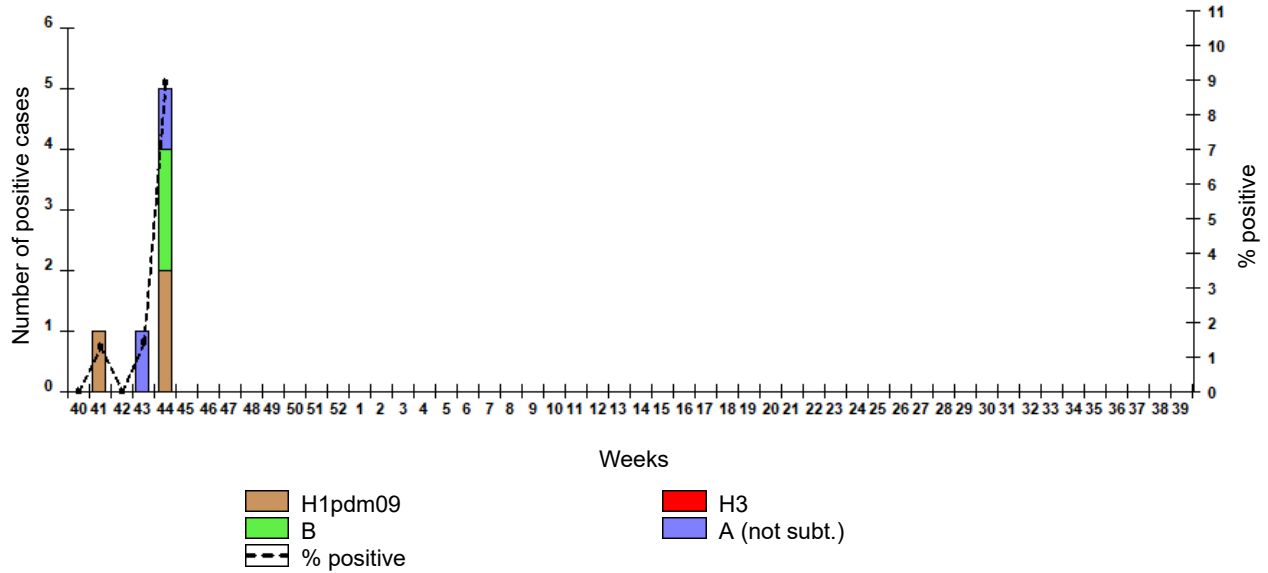


Fig. 10. Monitoring of influenza viruses detection by RT-PCR among ILI/ARI patients in sentinel polyclinics, season 2022/23

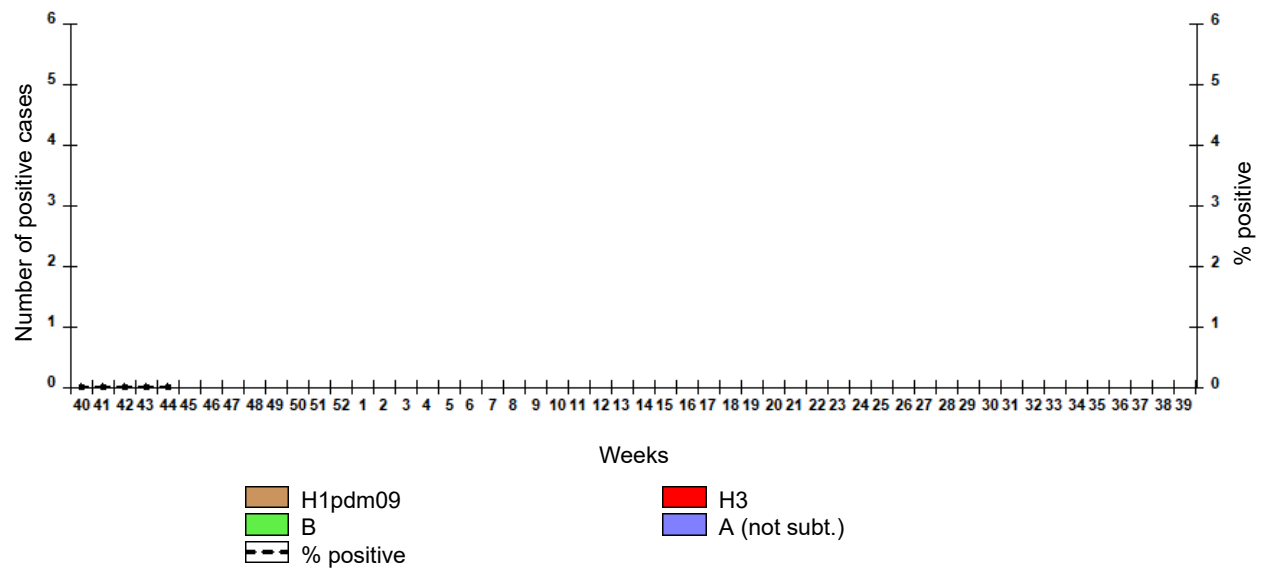


Fig. 11. Monitoring of ARVI detection by RT-PCR among SARI patients in sentinel hospitals, season 2022/23

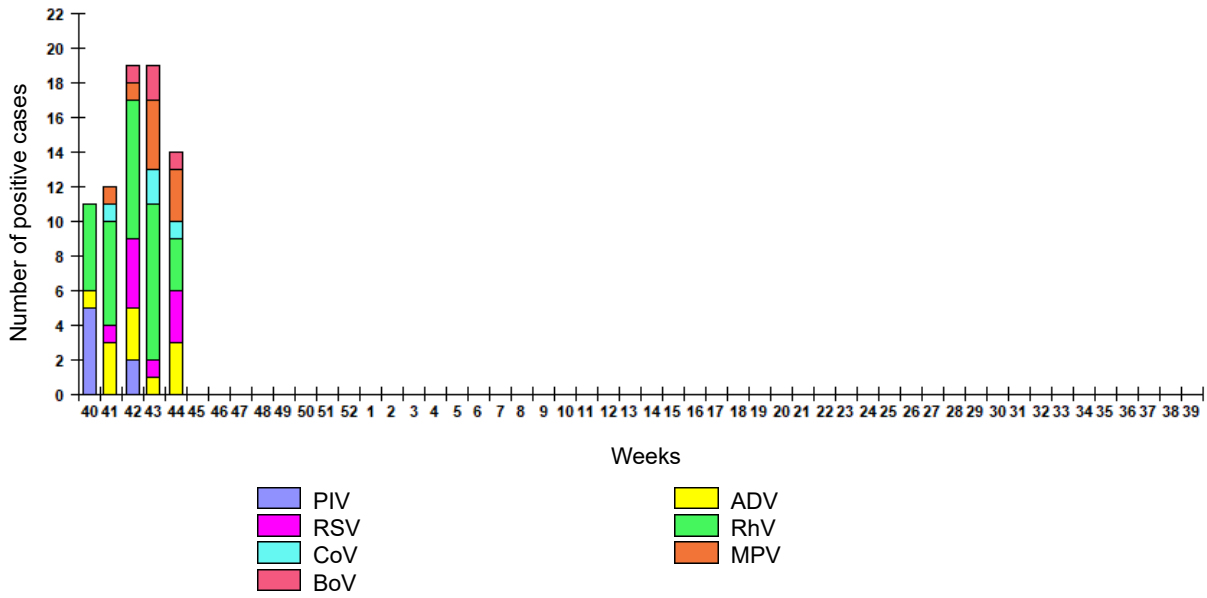


Fig. 12. Monitoring of ARVI detection by RT-PCR among ILI/ARI patients in sentinel polyclinics, season 2022/23

